



Seasonal Outlook

Gulf of St Lawrence, East Newfoundland Waters and Labrador Coast

Winter 2023-2024



Issued by the Canadian Ice Service
Environment and Climate Change Canada
December 1st, 2023



Gulf of St-Lawrence

Winter temperature and ice forecasts

The surface air temperature is expected to be above normal for the December-February period for the Gulf. Ice conditions are expected to be below normal.

The Estuary.

Outlook for December...

December 1-18 Open water except 1-3 tenths new ice along parts of the shore in the western section and near Sept Iles.

December 19-27: Open water except 7-8 tenths new along parts of the coast west of Baie Comeau. 7-8 tenths new and thin ice near Sept Iles.

December 28-31: Open water except 7-8 tenths new ice along the shores and in the western section. 7-8 tenths new and thin ice near Sept Iles.

Outlook for January...

January 1-12 Open water except 7-8 tenths new ice along the shores. 7-8 tenths new and thin ice in the western section and near ice near Sept Iles.

January 13-21: 4-6 tenths new and grey ice except 7-8 tenths grey ice in the western section and along parts of the shore.

January 22-31: 4-6 tenths new and grey ice except 7-8 tenths grey and grey-white ice in the western section and along the southern shore west of Gaspé.

Outlook for February...

February 1-14: 7-8 tenths new and grey ice except 9-9+ tenths grey and grey-white ice in the western section and along the southern shore west of Gaspé.

February 15-29: 9-9+ tenths grey except 9-9+ tenths grey and grey-white ice in the western section and along the southern shore west of Gaspé.

Chaleur Bay southward to Northumberland Strait.

Outlook for December...

December 1-20: Open water.

December 21-31: Open water except occasional patches of 7-8 tenths new ice along parts of the coast in southern Chaleur Bay and in Miramichi Bay.

Outlook for January...

January 1-15: Open water except 7-8 tenths new and grey ice along the coast.

Consolidated grey and grey-white ice in sheltered bays.

January 16-24: 7-8 tenths new and grey ice except 9-9+ tenths new and grey ice near the coasts. Consolidated grey-white ice in sheltered bays and inlets.

January 25-31: 9 tenths grey ice except 9-9+ tenths grey and grey-white ice along parts of the coast in Chaleur Bay and the Northumberland Strait.

Outlook for February...

February 1-12: 9 tenths grey ice except 9-9+ tenths grey and grey-white ice along parts of the coast in Chaleur Bay and the Northumberland Strait.

February 13-29: 9-9+ tenths grey and grey-white ice except 9-9+ tenths grey-white and first-year ice along parts of the shore in Chaleur Bay and in the Northumberland Strait.

Consolidated first-year ice in sheltered bays.

West coast of Newfoundland.

Outlook for December...

December 1-25: Open water.

December 26-31: Open water except 1-3 tenths new and grey ice in sheltered bays and inlets.

Outlook for January...

January 1-18: Open water except 1-3 tenths grey ice in sheltered bays and inlets.

January 19-31: Open water except 4-6 tenths grey ice in sheltered bays and inlets.

Outlook for February...

February 1-29: Open water except 4-6 tenths grey ice in sheltered bays and inlets.

Consolidated grey and grey-white ice in a few isolated sheltered bays. Open water except 4-6 tenths grey ice in sheltered bays and inlets

North Shore of Quebec.

Outlook for December...

December 1-10: Open water.

December 11-20: Open water except 1-3 tenths new ice along parts of the coast east of Natashquan.

December 21-31: Open water except 7-8 tenths new and grey ice along parts of the coast east of Natashquan. Consolidated grey ice in sheltered bays and inlets.

Outlook for January...

January 1-20: 4-6 tenths new and grey ice except 7-8 tenths new and grey ice along the coast east of Natashquan. Consolidated grey and grey-white ice in sheltered bays and inlets.

January 21-31: 7-8 tenths new and grey ice except 9-9+ tenths grey ice along the coast near the Strait of Belle Isle. Consolidated grey-white ice along parts of the coast north of Chevery.

Outlook for February...

February 1-29: 9-9+ tenths new and grey ice except 9-9+ tenths grey and grey-white ice east of Natashquan. Consolidated grey-white ice along parts of the coast north of Chevery.

Elsewhere.

Outlook for December...

December 1-31: Ice free to open water.

Outlook for January...

January 1-10: Ice free to open water except isolated areas of 1-3 tenths new and grey ice near the Îles de la Madeleine and in sheltered bays along the north shore of Prince Edward Island.

January 11-18: Ice free to open water except isolated areas of 7-8 tenths new and grey ice along the coast of Anticosti Island, the Îles de la Madeleine. 7-8 tenths grey ice along parts of the north coast of Prince Edward Island.

January 19-31: Open water except 7-8 tenths new and grey ice along the coast of the Îles de la Madeleine and along parts of the coast of Anticosti Island. 9-9+ tenths new and grey ice along the north coast of Prince Edward Island.

Outlook for February...

February 1-16: Ice free to open water except isolated areas of 7-8 tenths new and grey ice along the coast of Anticosti Island and the Îles de la Madeleine. 7-8 tenths grey ice along the north coast of Prince Edward Island. Consolidated grey and grey-white ice in bays and inlets along the north shore of Prince Edward Island.

February 17-29: Open water except 7-8 tenths new and grey ice near the Îles de la Madeleine and along the coast of Anticosti Island. 9-9+ tenths grey ice along the north coast of Prince Edward Island. Consolidated grey-white ice in bays and inlets along the north shore of Prince Edward Island.

East Newfoundland Waters and Labrador Coast.

Winter temperature and ice forecasts.

Average air temperatures are expected to be above normal for December to February over the East Newfoundland Waters. Near to above normal temperatures are forecast along the Labrador coast. Near to below normal ice conditions are forecast.

Labrador Coast.

Outlook for December...

December 1-8: Bergy water except 1-3 tenths new and grey ice along parts of the coast near Cartwright and northward.

December 9-23: Bergy water except 7-8 tenths new and grey ice along the coast near Cartwright and northward and 1-3 tenths new ice along the coast south of Cartwright. 9-9+ tenths grey ice along the coast north of Lake Melville.

December 24-31: 7-8 tenths new and grey ice except 9 tenths grey and grey-white ice north of Lake Melville.

Outlook for January...

January 1-10. 9-9+ tenths grey ice except 9-9+ tenths grey and grey-white ice beyond 60 nautical miles from the coast from Cartwright northwards. 7-8 tenths grey and grey-white ice beyond 120 nautical miles from the coast. Consolidated grey-white ice in bays along the coast.

January 11-21. 9-9+ tenths grey and grey-white ice except 9-9+ tenths grey-white ice beyond 60 nautical miles from the coast from Cartwright northwards. 4-6 tenths grey and grey-white ice beyond 150 nautical miles from the coast. Consolidated first-year ice in Sandwich Bay and along the coast north of Lake Melville.

January 22-31: 9-9+ tenths grey and grey-white ice except 9-9+ tenths grey-white and first-year ice north of Lake Melville. Consolidated first-year ice in Sandwich Bay and along the coast north of Lake Melville.

Outlook for February...

February 1-18: 9-9+ tenths grey-white and first-year ice except 9-9+ tenths first-year ice north of Cartwright. Consolidated first-year ice in Sandwich Bay and protected inlets along the Labrador coast southwards to the Strait of Belle Isle. Consolidated first-year ice along and extending to 30 nautical miles from the coast north of Lake Melville.

February 19-29: 9-9+ tenths first-year ice. Consolidated first-year ice along the Labrador coast and extending to 40 nautical miles from the coast north of Lake Melville

Strait of Belle Isle.

Outlook for December...

December 1-10: Open water.

December 11-25: Open water except 4-6 tenths new ice along parts of the coast.

December 26-31: 7-8 tenths new and grey ice. Consolidated grey ice in sheltered bays and inlets.

Outlook for January...

January 1-15: 4-6 tenths new and grey ice except 9-9+ tenths grey and grey-white ice in the northeastern section. Consolidated grey-white ice in sheltered bays and inlets.

January 26-31: 4-6 tenths new and grey ice except 9-9+ tenths grey and grey-white ice in the northeastern section. Consolidated grey-white ice along parts of the coast.

Outlook for February...

February 1-14: 9 tenths new and grey ice except 9-9+ tenths grey and grey-white in the northeastern section. Consolidated grey-white ice along parts of the coast.

February 15-29: 9 tenths grey ice except 9-9+ tenths grey-white and first-year ice in the northeastern section. Consolidated grey-white ice along parts of the coast.

Lake Melville.

Outlook for December...

December 1-9: 7-8 tenths new and grey ice except 9-9+ tenths grey ice along parts of the coast.

December 10-26: 9-9+ tenths grey and grey-white ice. Consolidated grey-white ice along parts of the coast.

December 27-31: 9+ tenths grey-white ice except consolidated grey-white and first-year ice along parts of the shore and the extreme western section.

Outlook for January...

January 1-7: 9+ tenths grey-white ice except consolidated grey-white and first-year ice along parts of the shore and the extreme western section.

January 8-17: 9+ tenths grey-white and first-year ice except consolidated first-year ice along parts of the shore and the extreme western section.

January 18-31: Consolidated first-year ice.

Outlook for February:

February 1-29: Consolidated first-year ice.

Newfoundland.

Outlook for December...

December 1-18: Ice free except open water along the coast.

December 19-31: Bergy water except 1-3 tenths new ice in isolated bays and inlets along the northern coast.

Outlook for January...

January 1-10: Bergy water except 1-3 tenths new ice in isolated bays and inlets along the northern coast. 7-8 tenths new and grey ice near St. Anthony.

January 11-22: Bergy water except 1-3 tenths new ice in isolated bays and inlets along the northern coast. 7-8 tenths grey and grey-white ice near and northeast of St. Anthony.

January 23-31: bergy water except 9 tenths grey and grey-white ice beyond 40 nautical miles from the north coast.

Outlook for February...

February 1-15: Bergy water except 9 tenths grey and grey-white ice except 9 tenths grey-white and first-year ice beyond 40 nautical miles from the north coast. 1-3 tenths grey ice along the north coast.

February 16-29: Bergy water except 7-8 tenths grey-white and first-year ice northeast of Bonavista. 9-9+ tenths grey-white and first-year ice north of the north coast. 9-9+ tenths first-year ice beyond 60 nautical miles northeast of St. Anthony.

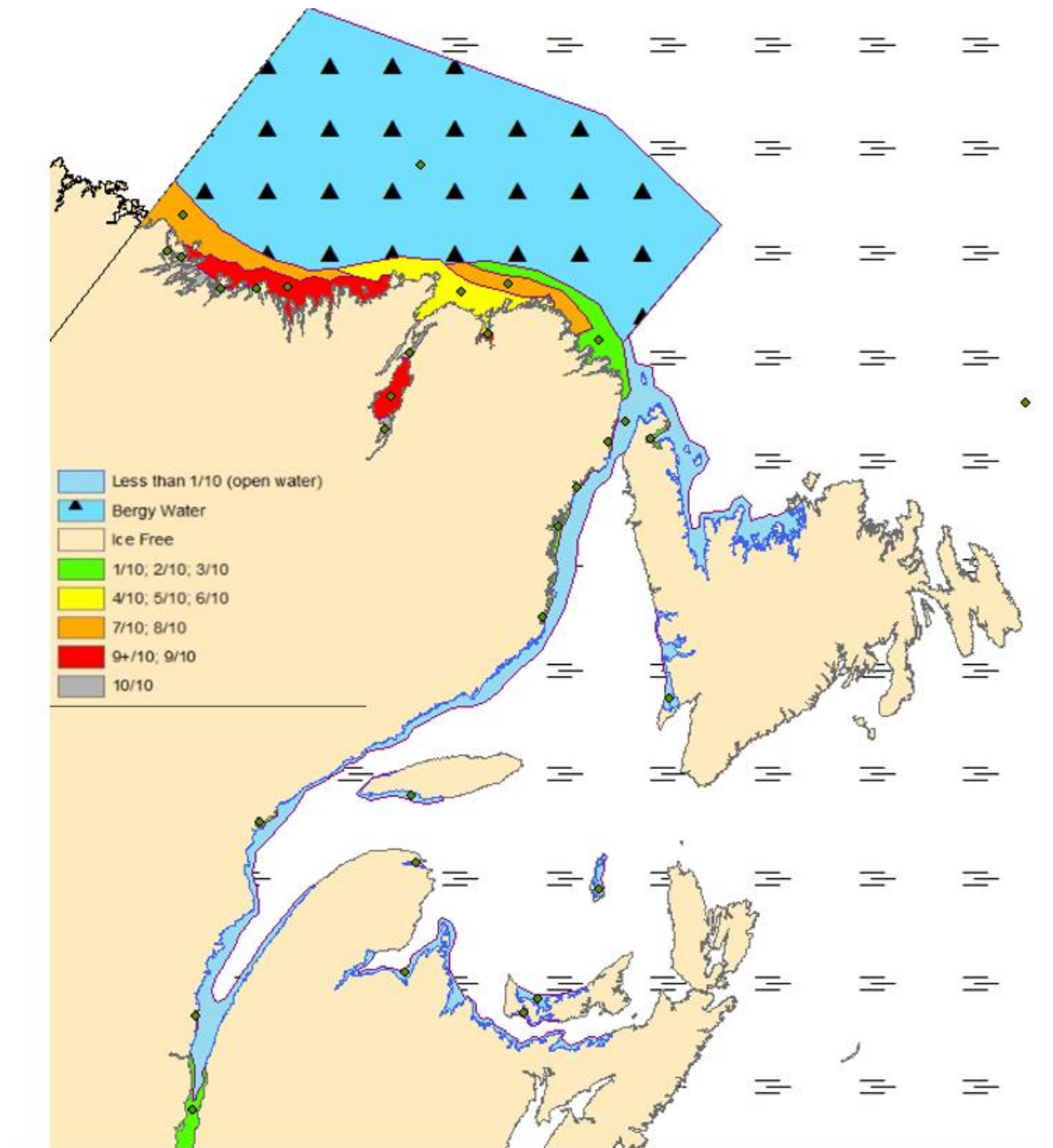


Figure 1: Expected ice conditions – mid-December 2023

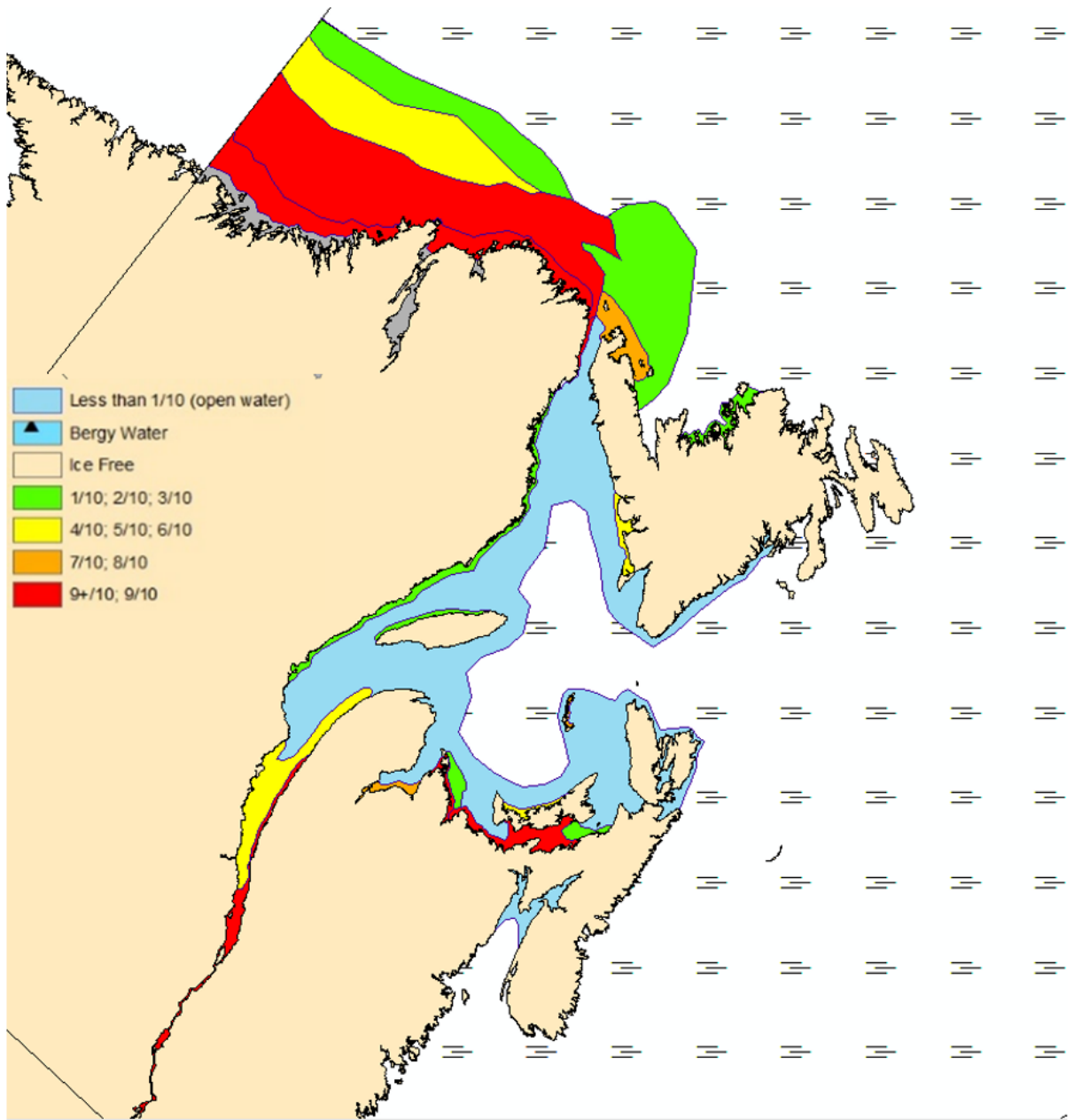


Figure 2: Expected ice conditions – mid-January 2024

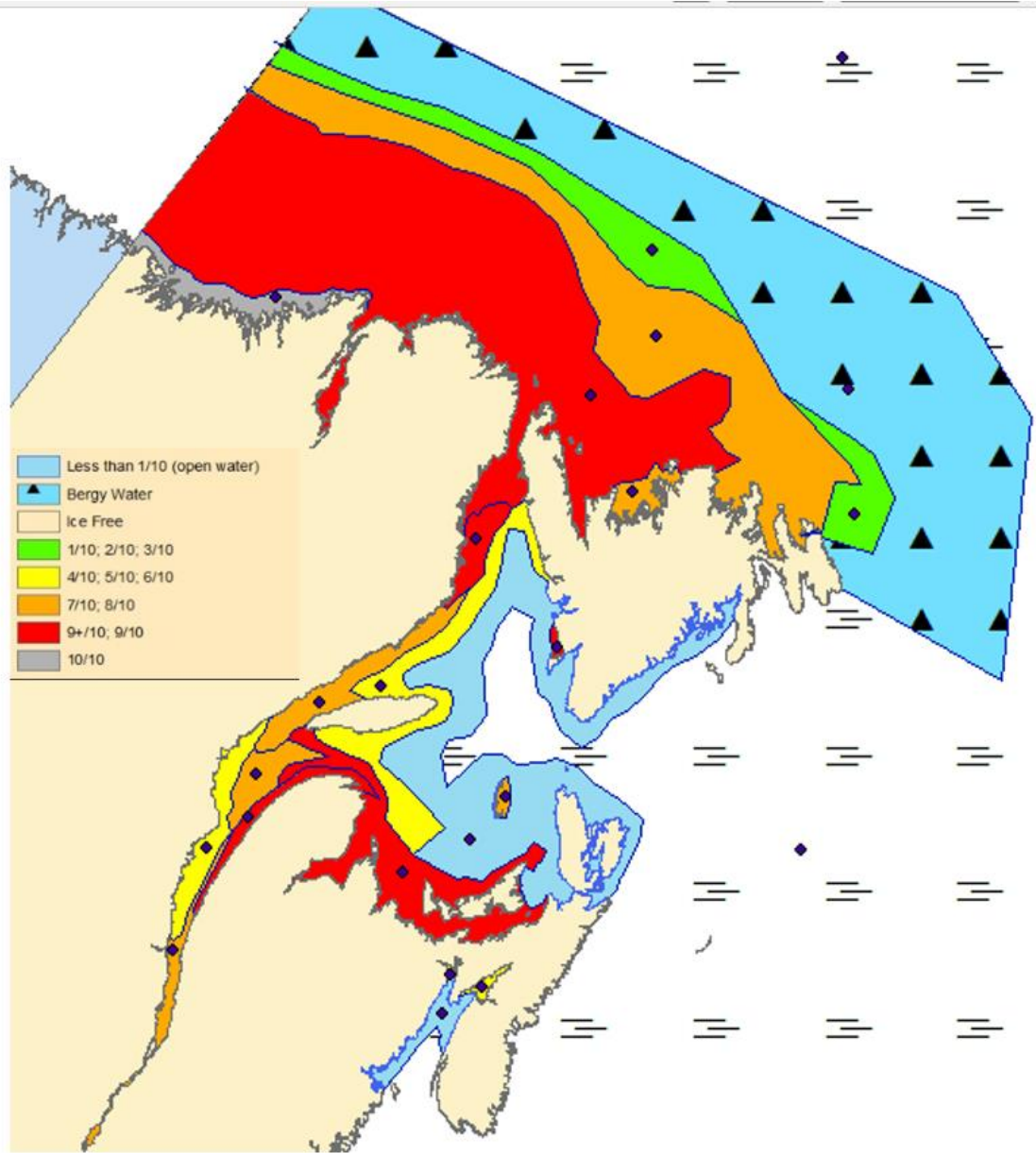


Figure 3: Expected ice conditions – mid-February 2024

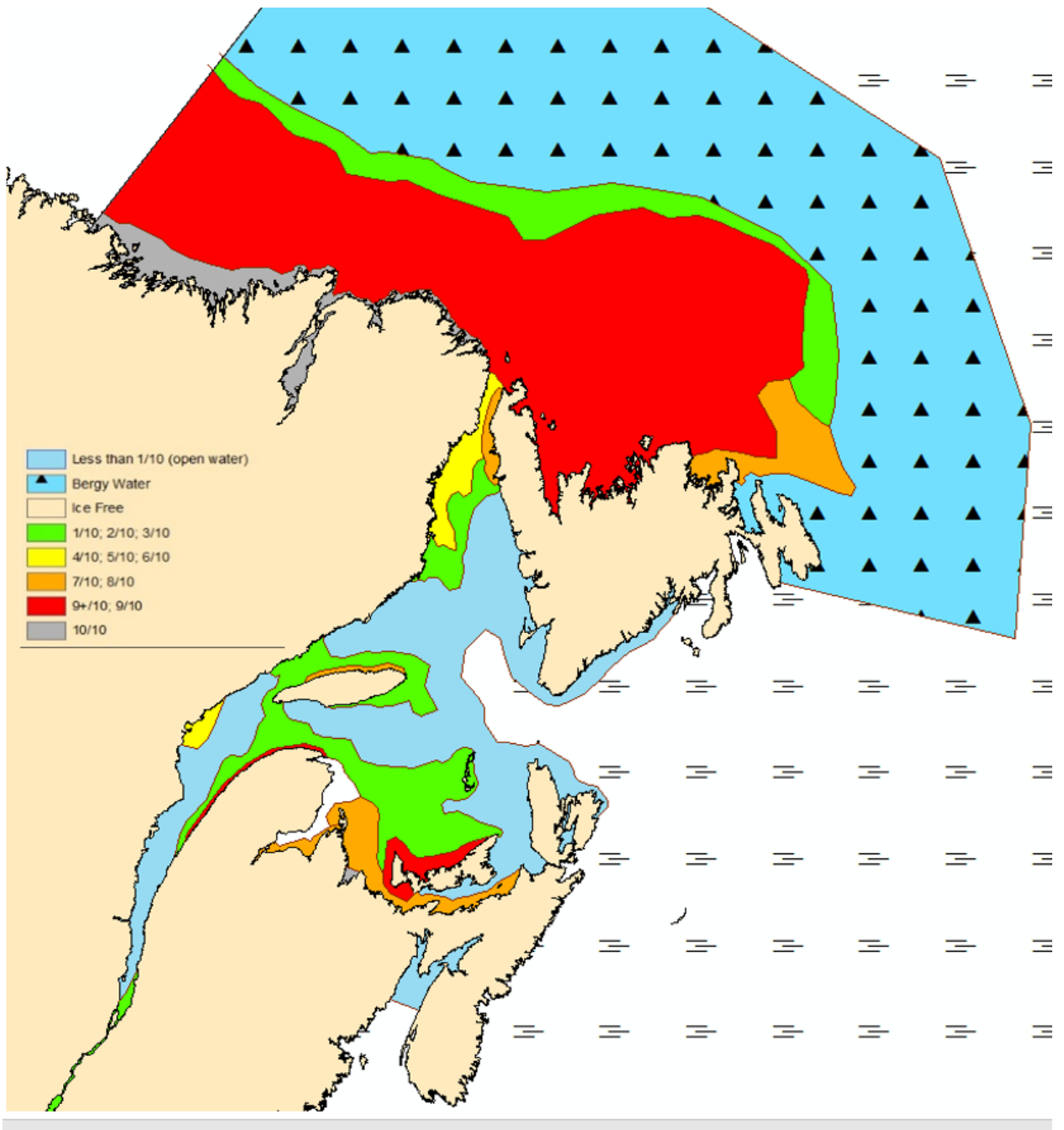


Figure 4: Expected ice conditions – mid-March 2024